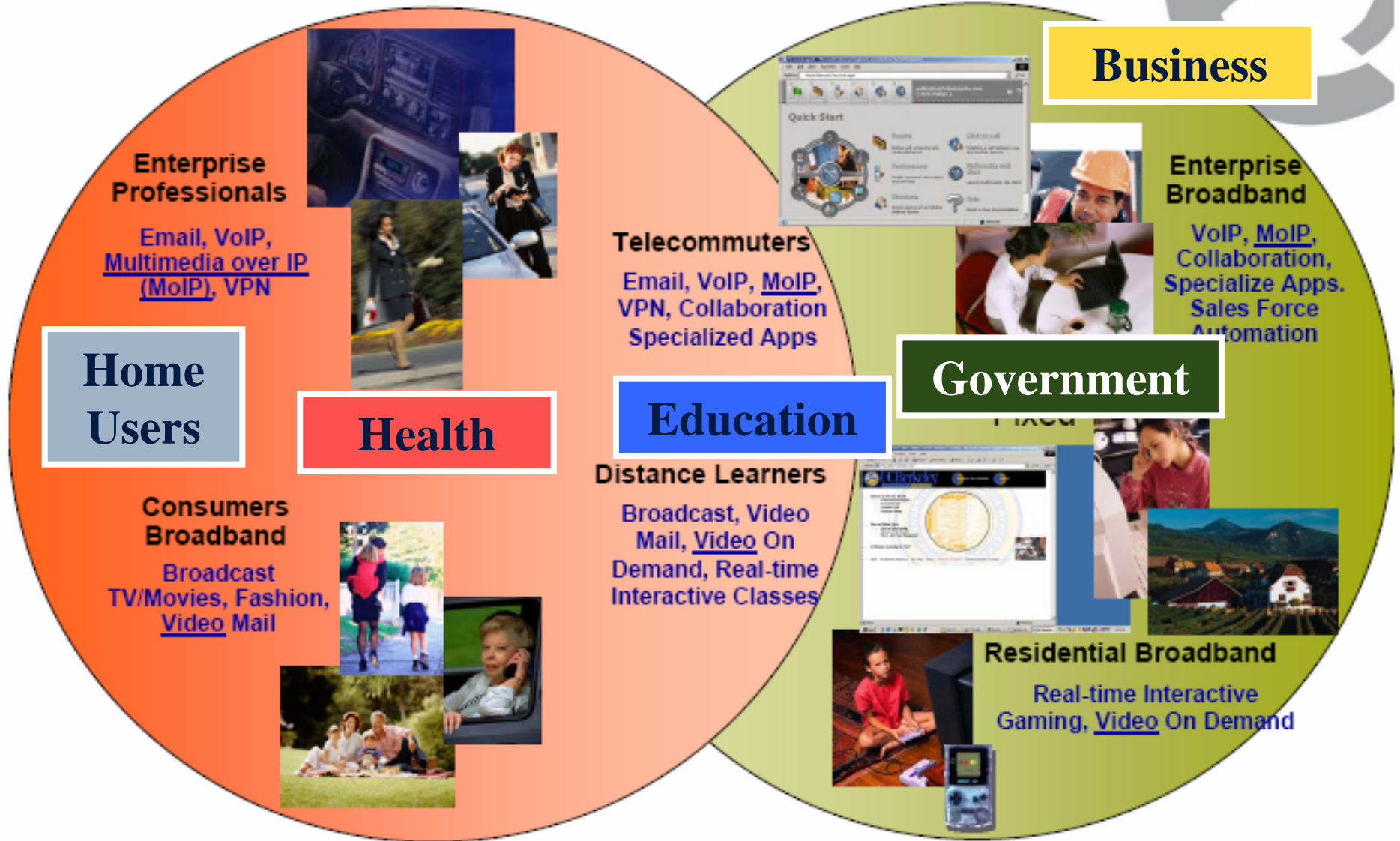


The Power of Partnerships

Michelle Dormody
Aboriginal Affairs
Bell Aliant
October, 2008



Evolving Broadband Requirement



So many uses, so many options, so little money,

Broadband Technology Primer - T 1, DSL, Ethernet

Broadband is a term to describe many different types of services and speeds of services.

DSL: non synchronous service, up to 5 - 7 Meg downstream and 640 kbps up.

Dedicated from the DSL server to the customer, but is a shared service once you get to the Internet cloud.

Distance Limitation of 4.7 km from network provider office

Ethernet: access from 1.5 Meg, 3 Meg, 5 Meg, 10 Meg, 100 Meg and Gigabit service.

Fully synchronous (Same speed up as down) and completely private and dedicated.

Usually used for private networks and LAN/WANs.

T-1 is 1.5 Meg – Can be provided over copper cable (voice network)

Wired Solutions vs Wireless Solutions / Secure & Un-secure Networks

We are at a Pivotal Point

- Access to Information and Communication Technologies for all First Nation Communities in Canada:
 - New Tools for Economic Development and Growth
 - Required Tools for Health and Education
- **The Big Question:** How do we build a network that's sustainable and built to Last?

**The answer is not about technology:
It's about the right partnerships & holistic
approach**

Strategic Players

First Nations

- **National: Strong Leadership**
 - *Linking investment and outcomes to economic and social success of all the communities*
- **Local/Regional: Leadership At Point of Contact**
 - *Connecting broadband to the needs/aspirations of the community thru a regional focus*

Governments

- *Vital source of funding & resources*
- *Require Public – Private Partnerships*

Leadership ensures next-generation networks are locally relevant and globally connected

Network Providers:

- **Any Network's Challenge is to be sustainable and scalable:
Requires long term planning , detailed Engineering and precise execution**
- **Success Depends on Network Providers Delivering...**
 - ❑ A local focus
 - ❑ Deep expertise
 - ❑ An integrated, holistic approach
- **What Works? The Case of Bell Aliant**
 - ❑ Connection to Communities
 - ❑ Connection to Innovation
 - ❑ A Strategic Focus and a Vision for communities outside the big cities

Three Foundations of Success

1

The ability to follow a strategically integrated approach

2

The capacity to take people beyond connectivity

3

A long-term commitment to the community

Thank you

Michelle Dormody

Aboriginal Affairs

Bell Aliant Regional Communications

Phone: 709-637-8212

Cell: 709-639-2112

Email: michelle.dormody@aliant.ca